



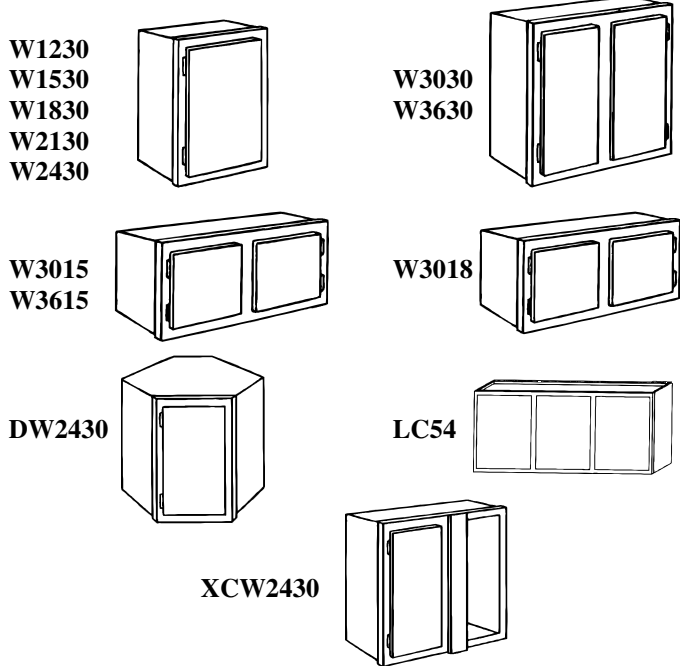
**IDEAL FOR:**  
 Kitchen  
 Bathroom  
 Laundry  
 Office  
 Storage  
 Garage

# “PREMIER” UNFINISHED OAK CABINETS

## Ready- To- Finish Cabinets

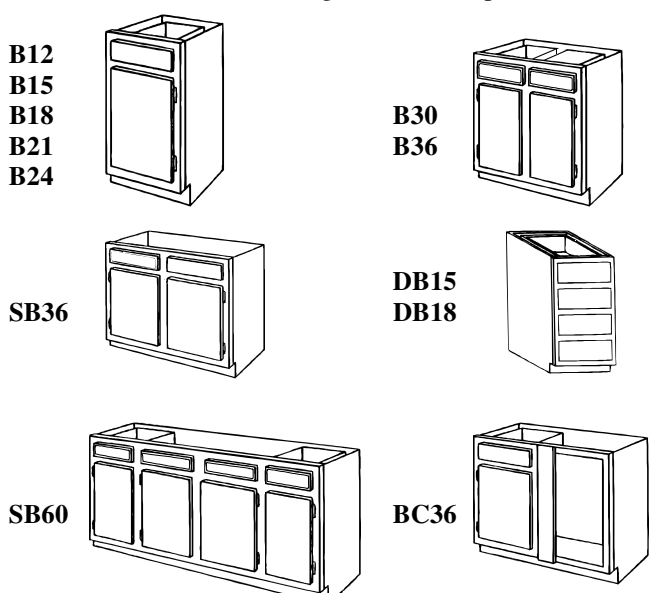
### Wall Cabinets

Standard Wall Cabinets are 12” deep



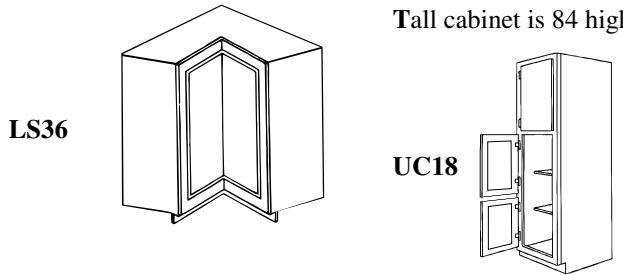
### Base Cabinets

All Base cabinets are 34 ½ high and 24” deep



### Tall Cabinet

Tall cabinet is 84 high and 24 deep



Wall	SKU #	W” x H” x D”	Qty	Price
W1230	4794011	12 x 30 x 12		
W1530	4794024	15 x 30 x 12		
W1830	4794037	18 x 30 x 12		
W2130	4794040	21 x 30 x 12		
W2430	4794053	24 x 30 x 12		
W3030	4794079	30 x 30 x 12		
W3630	4794095	36 x 30 x 12		
W3015	4794176	30 x 15 x 12		
W3615	4794192	36 x 15 x 12		
W3018	4794189	30 x 18 x 12		
DW2430	4794215	24 x 30 x 24		
LC5424	4794228	54 x 24 x 12		
XCW2430	4794202	24 x 30 x 12		
WEP1230	4794561	¼ x 30 x 11 ¼		
Base	SKU #	W” x H” x D”	Qty	Price
B12	4794260	12 x 34 ½ x 24		
B15	4794273	15 x 34 ½ x 24		
B18	4794286	18 x 34 ½ x 24		
B21	4794299	21 x 34 ½ x 24		
B24	4794309	24 x 34 ½ x 24		
B30	4794325	30 x 34 ½ x 24		
B36	4794341	36 x 34 ½ x 24		
SB36	4794464	36 x 34 ½ x 24		
DB15	4794422	15 x 34 ½ x 24		
DB18	4794435	18 x 34 ½ x 24		
BC36	4794480	36 x 34 ½ x 24		
SB60	4794477	60 x 34 ½ x 24		
LS36	4794493	36 x 34 ½ x 24		
BEP2434	4794558	¼ x 34 ½ x 23 ¼		
OTK96	4794600	¼ x 4 ½ x 96		
Tall	SKU #	W” x H” x D”	Qty	Price
UC188424	4794503	18 x 84 x 24		
UEP2484	4794574	¼ x 84 x 24		
Accessories	SKU #	W” x H” x D”	Qty	Price
UF330	4794587	3 x 30 x ¾		
VAL36	4794590	3 x 36 x ¾		

### Accessories

- Veneer Wall End Panel
- Veneer Base End Panel
- Veneer Utility End Panel
- Toe Kick
- Filler Strip
- Valance

*Proudly made in the USA*

Visit us online at [www.qualityonewoodwork.com](http://www.qualityonewoodwork.com)

**Quality One Woodwork** provides you with a full line of ready-to-finish cabinets using industrial grade materials for high quality cabinets at affordable prices. All cabinets are assembled and ready to install allowing you the hardware and finish of your choice. Start by planning your cabinet configuration using the grid paper below. When using corner cabinets, be sure to check the installation guide pertaining to those cabinets.

### HOW TO DESIGN YOUR ROOM

- 1. Measure The Entire Room-** Using the grid provided, record the length of each wall in your room. Each small square equals three inches, or one large square equals two feet. Measure all breaks in the walls, such as doors and windows. Measure from the corner of the wall to the outside edge of the moulding. Remember to indicate placement of the fixtures such as air vents and permanent appliances measuring to the centerline of plumbing, ducting and outlets, indicating each on the grid.
- 2. Create The Floor Plan-** Using the measurements you placed on the grid, begin drawing your Quality One cabinets from the available cabinet sizes listed on the flip side of this sheet. Start in the corner of the layout and work to the far walls. Consider convenience in your planning. It is often desirable to place the dishwasher next to the sink, and the sink within steps of the refrigerator and stove.
- 3. Final Steps-** You may wish to review your layout with a kitchen designer at the store from which you are purchasing your Quality One cabinets. They can assist you in your planning, offer suggestions on a layout and recommend accessories.

8 Small Squares = 2'

